

Gardener's Cottage – Kingston Lisle - £1,290 pcm



Deposit: £2,400
Lease Period: 3 years
Break Clause After 6 months
Council Tax Band: E
Unfurnished

Gardener's Cottage is a quirky character home in a very private and beautiful location being situated in the walled garden within the grounds of Kingstone Lisle Park.

Downstairs

- Hall
- Dining room with fireplace and pantry
- Sitting room with fireplace
- Kitchen
- Utility Room
- WC

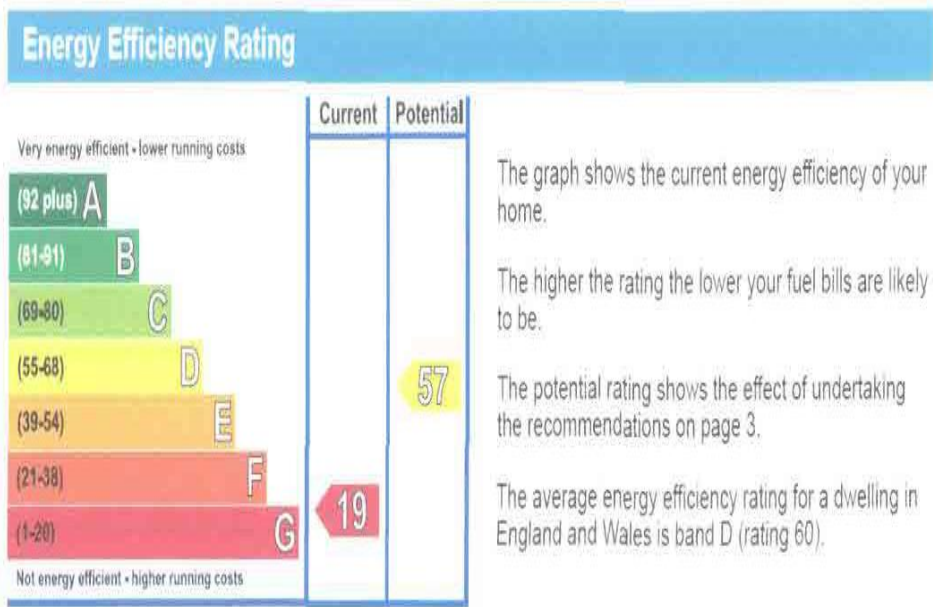
Upstairs

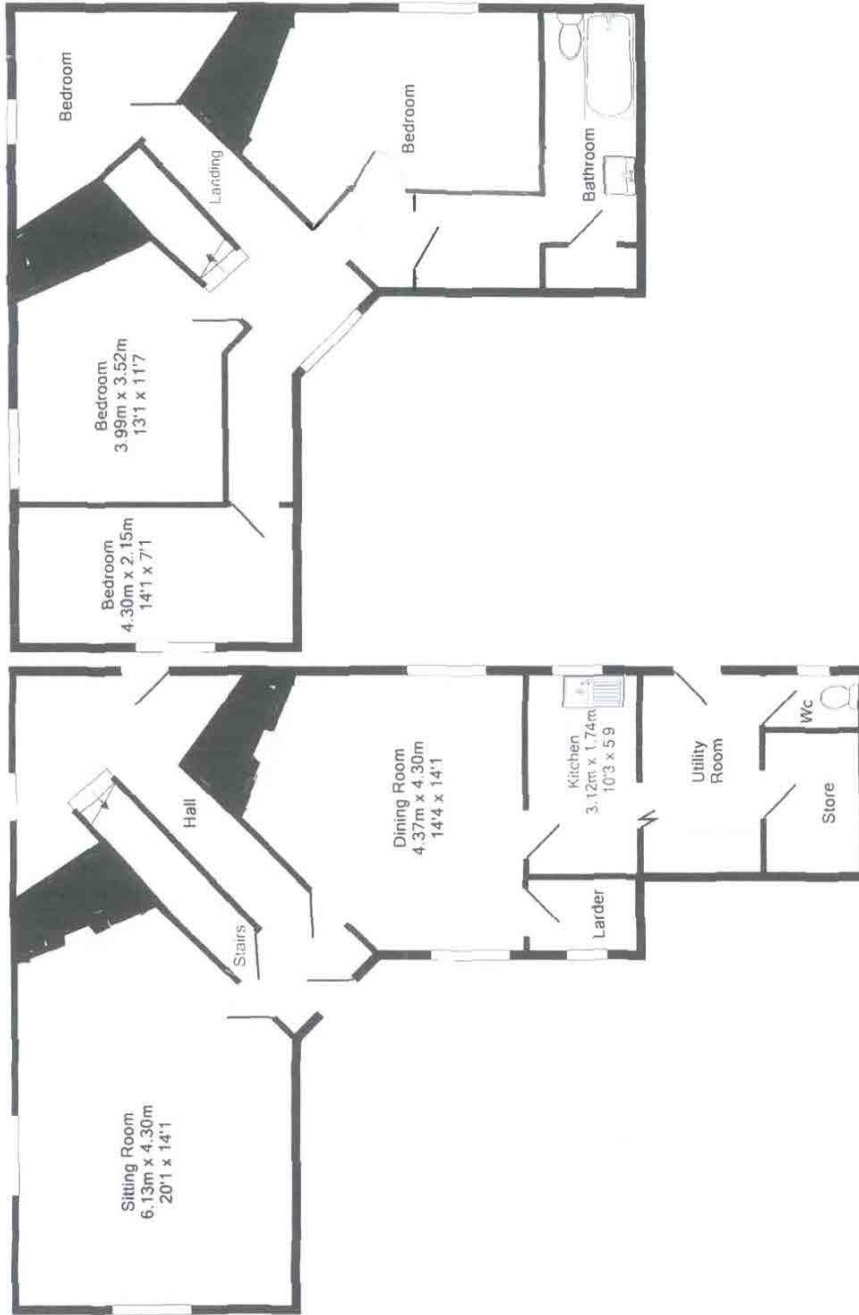
- Four bedrooms
- Family bathroom

Outside

The property has lovely gardens, and parking.

Well behaved pets welcome.





Ground Floor
Approx. Floor
Area 72.5 Sq M
(780 Sq Ft.)

1st Floor
Approx. Floor
Area 61.2 Sq M
(659 Sq Ft.)

Total Approx. Floor Area 133.7 Sq M. (1440 Sq Ft.)
We have every attempt made to ensure the accuracy of the floor plan contains new measurements of doors, windows, doors and any other items are approximate and no responsibility is taken for any error, omission or mis-statement. This plan is for illustrative purposes only and should be used as such by any.